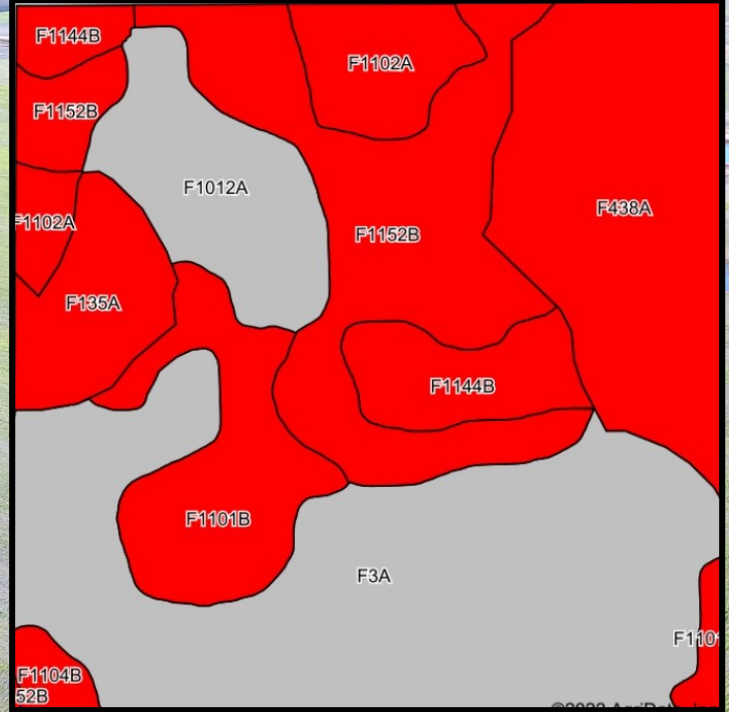


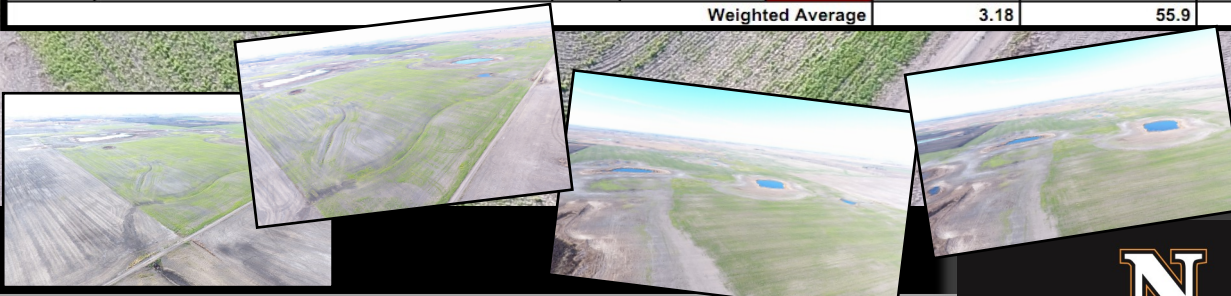
PARCEL 3 INFORMATION

Legal: NW¼ of Section 12-T157N-R67W, Atkins Twp, Towner Co, ND **Deeded Acres:** 160 +/-
2021 Real Estate Taxes: \$1,193.90 **FSA Cropland Acres:** 612.14 (All of Section 12)
Base Acres & PLC Yields (shared with Parcels 1-6): Wheat 364.82 ac, 52 bu; Flax 40.76 ac, 27 bu; Corn 50.17 ac, 112 bu; Soybeans 185.88 ac, 23 bu; Barley 145.54 ac, 55 bu; Canola 67.43 ac, 1,453 lbs
****FSA will have the final determination for prorating cropland acres, base acres and yields.**



Area Symbol: ND095, Soil Area Version: 24

Code	Soil Description	Acres	Percent of field	PI Legend	Non-Irr Class *c	Productivity Index	*n NCCPI Soybeans	
F3A	Parnell silty clay loam, 0 to 1 percent slopes	50.47	31.5%		Vw	25	12	
F1152B	Balaton-Souris-Svea loams, 0 to 4 percent slopes	28.81	18.0%		Ile	77	58	
F438A	Bearden-Lindaas silt loams, 0 to 2 percent slopes	26.95	16.8%		Ile	76	55	
F1101B	Hamerly-Wyard loams, 0 to 4 percent slopes	14.26	8.9%		Ile	73	52	
F1012A	Parnell-Vallers, saline, complex, 0 to 2 percent slopes	12.75	8.0%		Vw	33	14	
F1144B	Barnes-Buse loams, 2 to 6 percent slopes	8.85	5.5%		Ile	71	54	
F1102A	Hamerly-Wyard-Tonka complex, 0 to 3 percent slopes	8.35	5.2%		Ile	72	50	
F135A	Hamerly-Cresbard loams, 0 to 3 percent slopes	8.00	5.0%		Ile	75	53	
F1104B	Hamerly-Balaton loams, 0 to 4 percent slopes	1.74	1.1%		Ile	75	52	
Weighted Average						3.18	55.9	*n 38

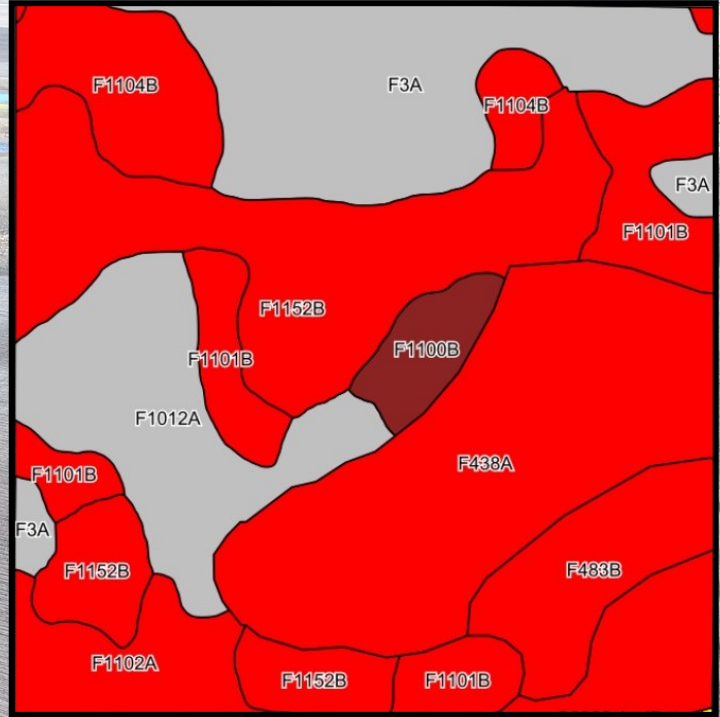


www.nikolaisenlandcompany.com



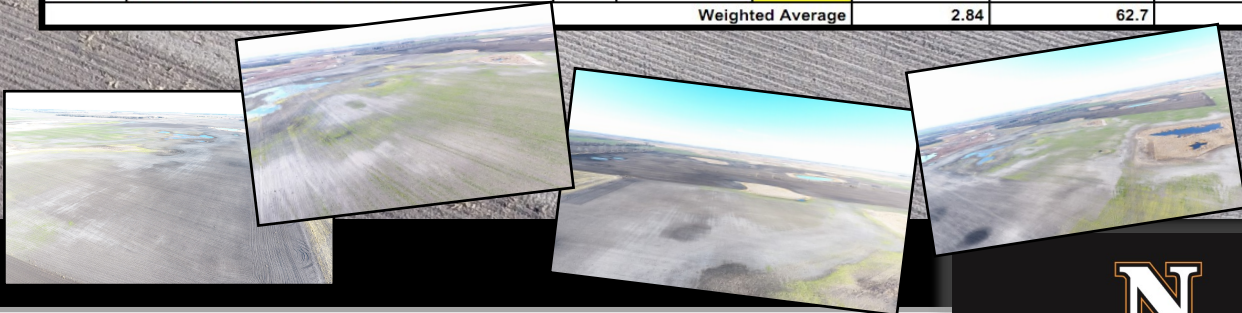
PARCEL 4 INFORMATION

Legal: SW¼ of Section 12-T157N-R67W, Atkins Twp, Towner Co, ND **Deeded Acres:** 160 +/-
2021 Real Estate Taxes: \$1,412.97 **FSA Cropland Acres:** 612.14 (All of Section 12)
Base Acres & PLC Yields (shared with Parcels 1-6): Wheat 364.82 ac, 52 bu; Flax 40.76 ac, 27 bu; Corn 50.17 ac, 112 bu; Soybeans 185.88 ac, 23 bu; Barley 145.54 ac, 55 bu; Canola 67.43 ac, 1,453 lbs
****FSA will have the final determination for prorating cropland acres, base acres and yields.**



Area Symbol: ND095, Soil Area Version: 24

Code	Soil Description	Acres	Percent of field	PI Legend	Non-Irr Class *c	Productivity Index	*n NCCPI Soybeans	
F438A	Bearden-Lindaas silt loams, 0 to 2 percent slopes	38.86	24.3%		Ile	76	55	
F1152B	Balaton-Souris-Svea loams, 0 to 4 percent slopes	32.72	20.5%		Ile	77	58	
F3A	Parnell silty clay loam, 0 to 1 percent slopes	25.05	15.7%		Vw	25	12	
F1012A	Parnell-Vallers, saline, complex, 0 to 2 percent slopes	16.95	10.6%		Vw	33	14	
F1101B	Hamerly-Wyard loams, 0 to 4 percent slopes	14.81	9.3%		Ile	73	52	
F1104B	Hamerly-Balaton loams, 0 to 4 percent slopes	10.61	6.6%		Ile	75	52	
F483B	Great Bend-Zell silt loams, 2 to 6 percent slopes	9.08	5.7%		Ile	75	55	
F1102A	Hamerly-Wyard-Tonka complex, 0 to 3 percent slopes	7.62	4.8%		Ile	72	50	
F1100B	Hamerly-Tonka complex, 0 to 4 percent slopes	3.81	2.4%		IVe	63	43	
F431A	Bearden silt loam, 0 to 2 percent slopes	0.10	0.1%		Ile	81	53	
Weighted Average						2.84	62.7	*n 43.5



www.nikolaisenlandcompany.com

