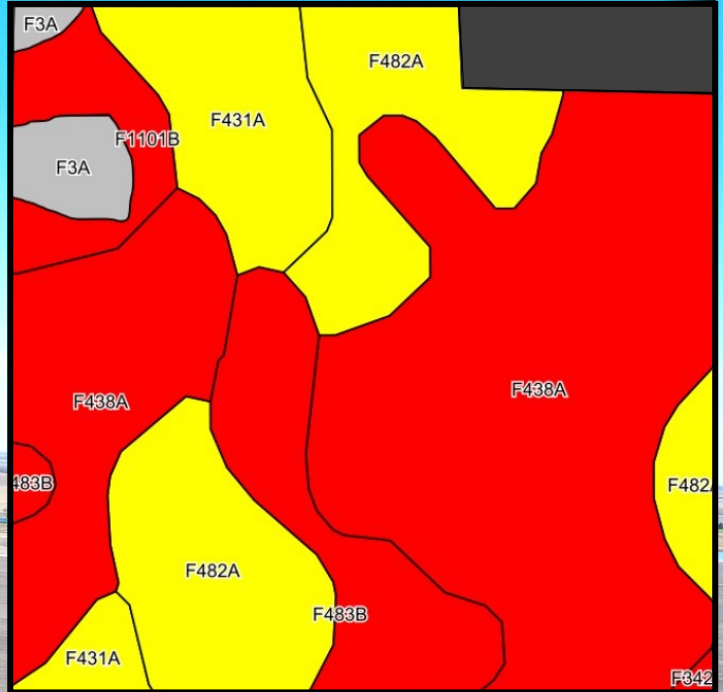


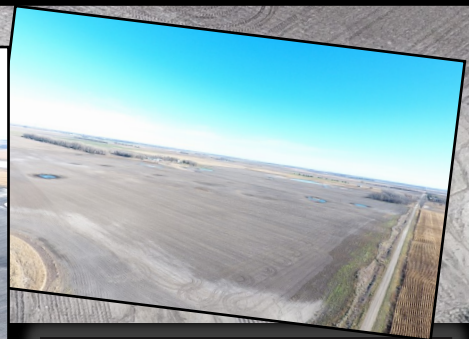
PARCEL 5 INFORMATION

Legal: SE¼ LESS 11 farmstead acres (see survey) of Section 12-T157N-R67W, Atkins Twp, Towner Co, ND
Deeded Acres: 149 +/- **2021 Real Estate Taxes:** \$1,643.14 **FSA Cropland Acres:** 612.14 (All of Section 12)
Base Acres & PLC Yields (shared with Parcels 1-6): Wheat 364.82 ac, 52 bu; Flax 40.76 ac, 27 bu; Corn 50.17 ac, 112 bu; Soybeans 185.88 ac, 23 bu; Barley 145.54 ac, 55 bu; Canola 67.43 ac, 1,453 lbs
****FSA will have the final determination for prorating cropland acres, base acres and yields.**



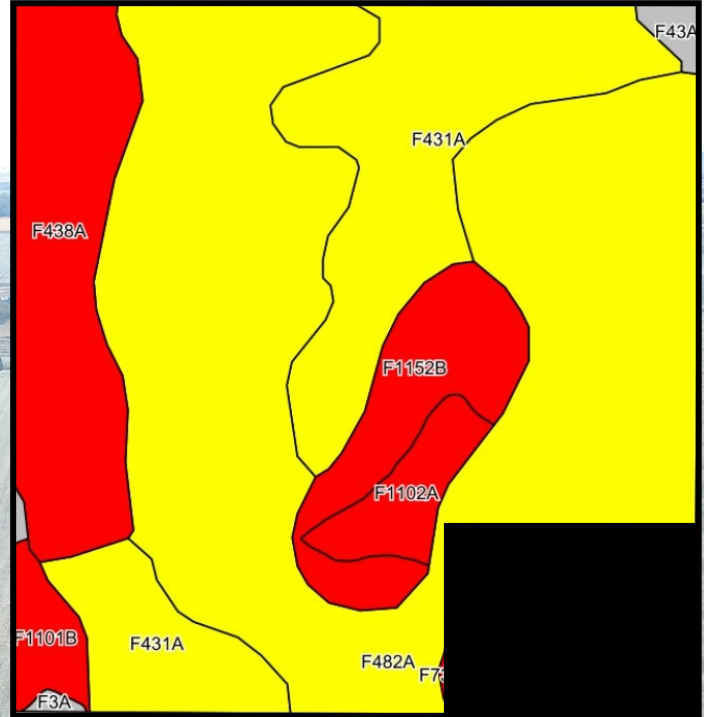
Area Symbol: ND095, Soil Area Version: 24

Code	Soil Description	Acres	Percent of field	PI Legend	Non-Irr Class *c	Productivity Index	*n NCCPI Soybeans	
F438A	Bearden-Lindaas silt loams, 0 to 2 percent slopes	73.74	50.8%		Ile	76	55	
F482A	Great Bend-Overly silt loams, 0 to 2 percent slopes	31.01	21.4%		Ilc	85	57	
F431A	Bearden silt loam, 0 to 2 percent slopes	14.88	10.3%		Ile	81	53	
F483B	Great Bend-Zell silt loams, 2 to 6 percent slopes	14.47	10.0%		Ile	75	55	
F1101B	Hamerly-Wyard loams, 0 to 4 percent slopes	6.52	4.5%		Ile	73	52	
F3A	Parnell silty clay loam, 0 to 1 percent slopes	4.12	2.8%		Vw	25	12	
F342A	Wyndmere-Delamere loams, silty substratums, 0 to 2 percent slopes	0.35	0.2%		Ile	78	48	
Weighted Average						2.09	76.8	*n 53.8



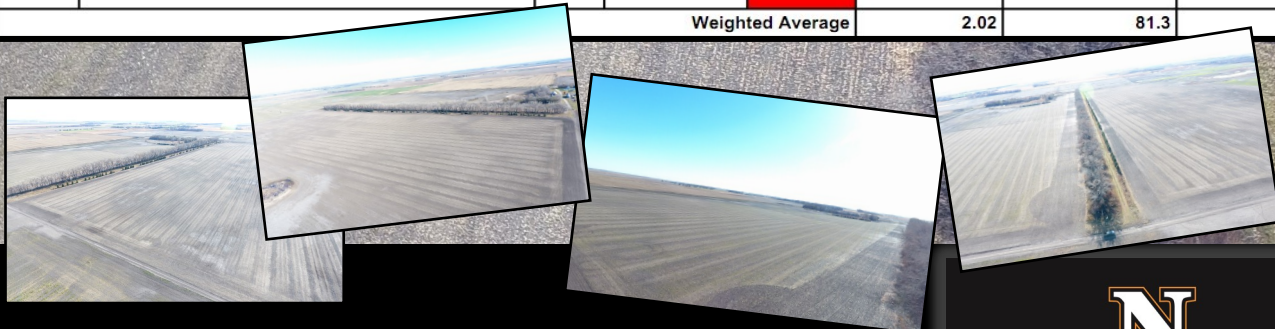
PARCEL 6 INFORMATION

Legal: NE¼ LESS 15.1 farmstead acres (see survey) of Section 12-T157N-R67W, Atkins Twp, Towner Co, ND
Deeded Acres: 144.9 +/- **2021 Real Estate Taxes:** \$1,501.94 **FSA Cropland Acres:** 612.14 (All of Section 12)
Base Acres & PLC Yields (shared with Parcels 1-6): Wheat 364.82 ac, 52 bu; Flax 40.76 ac, 27 bu; Corn 50.17 ac, 112 bu; Soybeans 185.88 ac, 23 bu; Barley 145.54 ac, 55 bu; Canola 67.43 ac, 1,453 lbs
****FSA will have the final determination for prorating cropland acres, base acres and yields.**



Area Symbol: ND095, Soil Area Version: 24

Code	Soil Description	Acres	Percent of field	PI Legend	Non-Irr Class *c	Productivity Index	*n NCCPI Soybeans	
F482A	Great Bend-Overly silt loams, 0 to 2 percent slopes	79.03	53.0%		IIc	85	57	
F431A	Bearden silt loam, 0 to 2 percent slopes	31.31	21.0%		IIe	81	53	
F438A	Bearden-Lindaas silt loams, 0 to 2 percent slopes	19.37	13.0%		IIe	76	55	
F1152B	Balaton-Souris-Svea loams, 0 to 4 percent slopes	10.29	6.9%		IIe	77	58	
F1102A	Hamerly-Wyard-Tonka complex, 0 to 3 percent slopes	4.40	3.0%		IIe	72	50	
F1101B	Hamerly-Wyard loams, 0 to 4 percent slopes	3.01	2.0%		IIe	73	52	
F43A	Colvin silt loam, 0 to 1 percent slopes	1.02	0.7%		IVw	45	36	
F3A	Parnell silty clay loam, 0 to 1 percent slopes	0.49	0.3%		Vw	25	12	
F732B	Swenoda-Barnes complex, 3 to 6 percent slopes	0.12	0.1%		IIIe	73	54	
Weighted Average						2.02	81.3	*n 55.4



www.nikolaisenlandcompany.com

